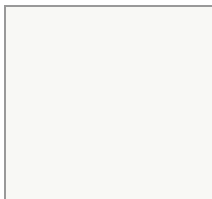




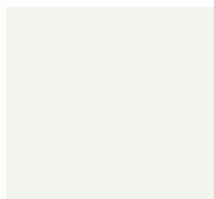
# COLOR CHART

## Prepainted Steel Color Selection Guide

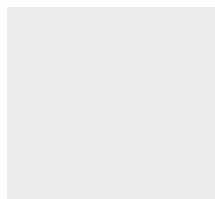
SMP pre-painted steel is a high quality painted steel product with many uses in the building trades, has a life expectancy of 30+ years, and is available with our in-house warranty.



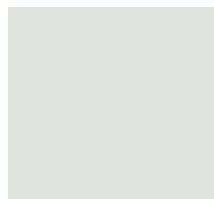
**Polar White**  
QC1820 - R



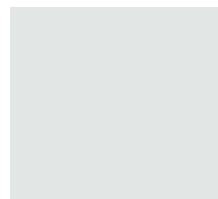
**Cambridge White**  
QC8695



**White-White**  
QC8317



**Bone White**  
QC8273



**Surf White**  
QC8316



**Regent Gray**  
QC8730



**Stone Gray**  
QC8305



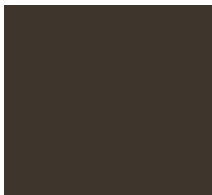
**Charcoal**  
QC8306



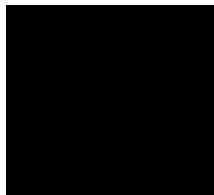
**Metro Brown**  
QC8228



**Coffee Brown**  
QC8326



**Dark Brown**  
QC8229



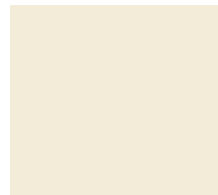
**Black**  
QC8262



**Tan**  
QC8315



**Briarwood Tan**  
QC8331



**Antique Linen**  
QC8696



**Gold**  
QC8276



**Sapphire Blue**  
QC8261



**Slate Blue**  
QC8260



**Heron Blue**  
QC8330



**Labrador Blue**  
QC8688



**Royal Blue**  
QC8790



**Bright Red**  
QC8386



**Dark Red**  
QC8250



**Tile Red**  
QC8259



**Melchers Green**  
QC8307



**Forest Green**  
QC8329



**Spruce Green**  
QC8697



**Sage Green**  
QC6089



**Mist Green**  
QC8256



**Deep Water Green**  
QC3684



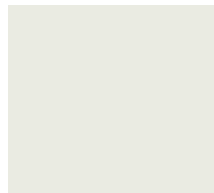
**Dark Green**



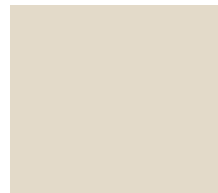
**Turquoise**  
QC8310



**Pacific Turquoise**  
QC8258



**Cashmere**  
\*New\*



**Wicker**  
\*New\*



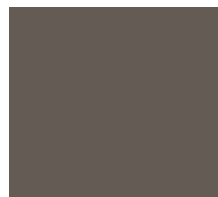
**Pebblestone**  
\*New\*

## 12,000 Series Premium West Coast Colors

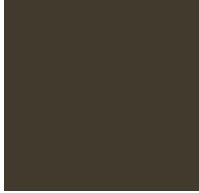
---

### PVDF/Kynar 500®

**Kynar**, or Polyvinylidene Fluoride (PVDF) pre-painted 55% Al-Zn Steel, is available in over 22 different colors. This material is the highest quality painted steel product currently on the market and has found many uses in the building trades.



**Regal White<sup>o</sup>**  
CM 12 - 2011



**Parchment<sup>o</sup>**  
CM 12 - 2015



**Sierra Tan<sup>o</sup>**  
CM 12 - 2017



**Old Zinc Gray<sup>o</sup>**  
CM 12 - 2003



**Weathered Copper<sup>o</sup>**  
CM 12 - 2013



**Dark Bronze<sup>o</sup>**  
CM 12 - 2001



**Old Town Gray<sup>o</sup>**  
CM 12 - 2019



**Slate Gray<sup>o</sup>**  
CM 12 - 2009



**Twilight Blue<sup>o</sup>**  
CM 12 - 2004



**Regal Blue<sup>o</sup>**  
CM 12 - 2012



**Hemlock Green<sup>o</sup>**  
CM 12 - 2016



**Forest Green<sup>o</sup>**  
CM 12 - 2018



**Hartford Green<sup>o</sup>**  
CM 12 - 2002



**Terra Cotta<sup>o</sup>**  
CM 12 - 2014



**Retro Red<sup>o</sup>**  
CM 12 - 2010



**Colonial Red<sup>o</sup>**  
CM 12 - 2020



**Copper Penny<sup>o</sup>**  
CM 12 - 2005



**Silver Metallic<sup>o</sup>**  
CM 12 - 2008



**Champagne  
Metallic<sup>o</sup>**  
CM 12 - 2007



**Weathered Zinc<sup>o</sup>**  
CM 12 - 2006



**Black<sup>o</sup>**  
CM 12 - 2022



**Bronze<sup>o</sup>**  
CM 12 - 2021



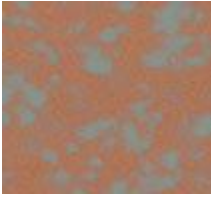
**Zinc Grey<sup>o</sup>**  
CM 12 - 2023



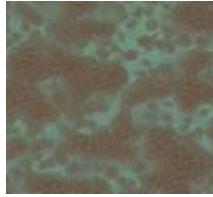
## Printed Steel

---

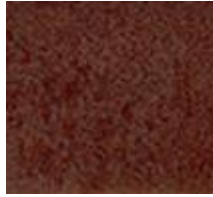
Other colors available with minimum order.



**Cascadia Copper**



**Vintage Copper**



**Rustic Red**



**Dark Zinc**



**Aged Copper**



**Light Zinc**

CM 12 - 2001

## Cascadia Cool

---



Our new Cascadia Cool™ line of energy efficient "SOLAR REFLECTIVE" colors will enable builders and architects alike to provide energy friendly buildings which will ultimately be a benefit to our environment for generations to come. Colors listed above that have a degree symbol (°) next to their name are available with the Cascadia Cool™ finish.